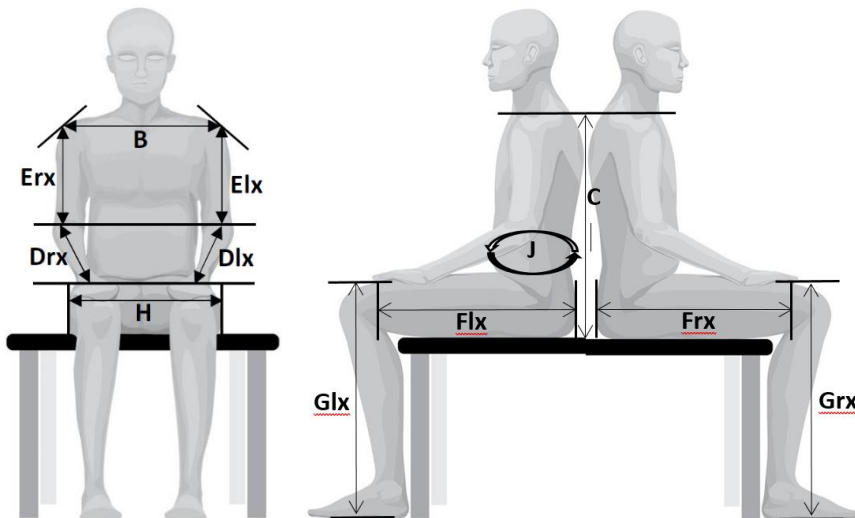


# ORDER FORM – PRO EVO

END USER	
DEALER	
SHIPPING ADDRESS	
PHONE NUMBER	

 ORDER

 QUOTATION


BODY HEIGHT	cm
BODY WEIGHT	kg
B	cm
C	cm
Drx	cm
Dlx	cm
Erx	cm
Elx	cm
Frx	cm
Flx	cm
Grx	cm
Glx	cm
H	cm
J	cm



A	cm
B	cm
C	cm
F	cm

Additional information about the customer:

---



---



---



---

PHOTOS OF THE CUSTOMER ON A HANDBIKE	<input type="checkbox"/> LATERAL	<input type="checkbox"/> FRONT	<input type="checkbox"/> REAR
PHOTOS OF THE CUSTOMER IN THE WHEELCHAIR	<input type="checkbox"/> LATERAL	<input type="checkbox"/> FRONT	<input type="checkbox"/> REAR

ORDER FORM			QUANTITY	PRICE (€)	TOTAL (€)	
	RACE PRO EVOLUTION					
	RACE PRO EVOLUTION SHIMANO Di2 ULTEGRA					
	RACE PRO EVOLUTION HYBRID					
	RACE PRO EVOLUTION SHIMANO Di2 ULTEGRA 250W 33V HYBRID					
<b>FRAME</b>	ALUMINIUM ALLOY 7020		01	-	-	
<b>FORK</b>	ALUMINIUM ALLOY 7020 ADJUSTABLE IN HEIGHT AND LENGTH			-	-	
<b>POSITION</b>	LYING POSITION			-	-	
	MORE UPRIGHT POSITION			-	-	
<b>SHIFTING</b>	<u>FOR PARAPLEGICS: MECHANICAL SHIFTING OPTIONS</u>					
	<b>GROUPSET</b>	<b>MOUNTING</b>	<b>YOUR CHOICE</b>			
	SHIMANO XT TRIGGER	RIGHT GRIP		- -	- -	
	<u>FOR PARAPLEGICS: ELECTRONIC SHIFTING OPTIONS</u>					
	<b>MOUNTING</b>	<b>YOUR CHOICE</b>				
	RIGHT GRIP			-	-	
	LEFT GRIP			-	-	
	<u>FOR TETRAPLEGICS: ELECTRONIC SHIFTING OPTIONS</u>					
	<b>MOUNTING</b>	<b>YOUR CHOICE</b>				
	CHIN SHIFTING			+		
	ELBOW SHIFTING			+		
	<b>BRAKE</b>	DOUBLE FRONT CALIPER BRAKE			-	-
		FRONT CALIPER BRAKE + MECHANICAL FRONT DISK BRAKE			+	
FRONT CALIPER BRAKE + HYDRAULIC FRONT DISK BRAKE			+			
TETRAPLEGIC COASTER BRAKE			+			
TETRAPLEGIC ELBOW BRAKING SUPPORT ON BOTH FRAMESIDES (SELECT SHIFTING SUPPORT)			-			
<b>CHAINRING</b> 11x2V.	34-48			-	-	
	34-50			-	-	
	36-52			-	-	
	34-46			-	-	
<b>CASSETTE</b>	SHIMANO 11V. 11-32			-	-	
	SHIMANO 11V. 11-36			-	-	
	SHIMANO 11V. 11-40			-	-	
	SHIMANO 11V. 11-42			-	-	
<b>1° SET OF WHEELS</b>	SET WHEELSBIKE STANDARD ALUMINIUM WHEELS 26/20''			-	-	
	SET WHEELSBIKE STANDARD ALUMINIUM WHEELS 26/26''			-	-	
	SET WHEELSBIKE SUPERLIGHT ALUMINIUM WHEELS 20/26'' (UPGRADE)			+		
	SET WHEELSBIKE SUPERLIGHT ALUMINIUM WHEELS 26/26'' (UPGRADE)			+		

<b>TIRES</b>	VITTORIA RUBINO PRO 650x23c 23-571			-	-
	SCHWALBE PRO ONE TLE 26"x1,10"			-	-
	SCHWALBE PRO ONE TLE 20"x1,10"			-	-
<b>CRANKARMS</b> (in mm)	152,5			-	-
	155			-	-
	157,5			-	-
	160			-	-
	162,5			-	-
	165			-	-
	167,5			-	-
	170			-	-
<b>HANDGRIPS</b>	ERGONOMIC ALUMINIUM 28° - Ø35mm (30mmx38mm) - SIZE M			-	-
	ERGONOMIC ALUMINIUM 28° - Ø38mm (35mmx40mm) - SIZE L			-	-
	TETRAPLEGIC HANDGRIPS			+	
	TETRAPLEGIC ACTIVE HANDS GENERAL PURPOSE GRIPPING AID (PAIR)			+	
		<b>WRIST CIRCUM- FERENCE</b>	<b>WRIST-MIDDLE FINGER (TOP)</b>	<b>YOUR CHOICE</b>	
<b>SMALL</b>	135mm-150mm 5.3"-5,9"	135mm-175mm 5.3"-6.9"			
<b>STANDARD</b>	145mm-185mm 5.7"-7.2"	175mm-210mm 6.8"-8.3"			
<b>LARGE</b>	180mm-220mm 7.1"-8.7"	195mm-280mm 7.7"-11.0"			
<b>CUSHION</b>	P.A. TECHNOLOGY CUSHION			01	-
<b>FOOTREST</b>	ADJUSTABLE FOOTREST			01	-
<b>ACCESSORIES</b>	SAFETY FLAG			01	-
	DRAFTING BUMPER			01	-
	CARBON FIBER CHAINGUARD			01	-
	MIRROR			01	-
	LEG FIXATION STRAPS WITH LATERAL FIXATION PLATES				+
	SAFETY BELT				+
	WATER BOTTLE AND CAGE				+
	COMPUTER GARMIN 530 PERFORMANCE				+
	COMPUTER GARMIN 830 PERFORMANCE				+
	SRM POWERMETER + AXIS 24mm & FLANGE				+
	POWER2-MAX NGeco + AXIS 24mm & FLANGE				+
	POWER2-MAX NG + AXIS 24mm & FLANGE				+
	FRONT LIGHT LED MICRO DRIVE 600 LUMEN, USB-RECHARGING				+
	FRONT LIGHT LED SUPER DRIVE 1600 LUMEN, USB-RECHARGING				+
	REAR LIGHTLED STRIP DRIVE 150 LUMEN, MICRO-USB-RECHARGING				+
EXTRA STEERING DUMPNER				+	
<b>COLORS</b>	FORK COLOR			01	-

FORK DECALS COLOR		01	-	-
FRAME COLOR		01	-	-
FRAME DECALS COLOR		01	-	-
FINISH OF THE BIKE	O MATT      O GLOSSY	01	-	-