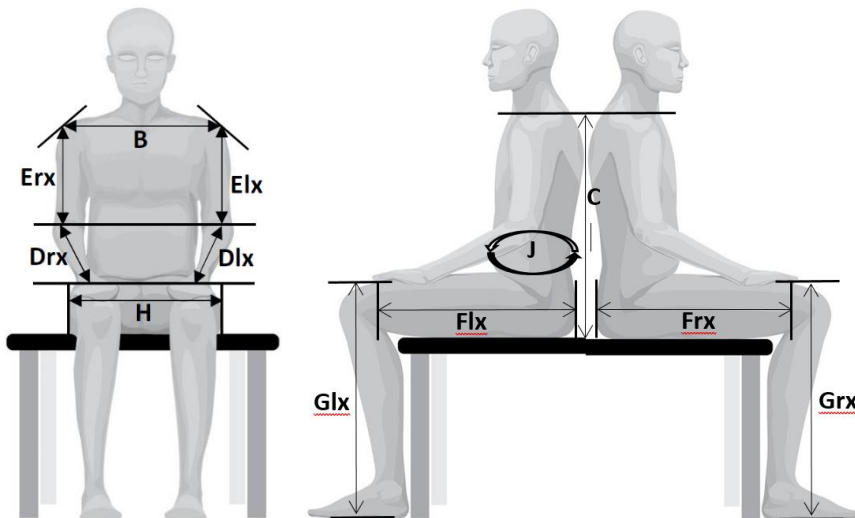


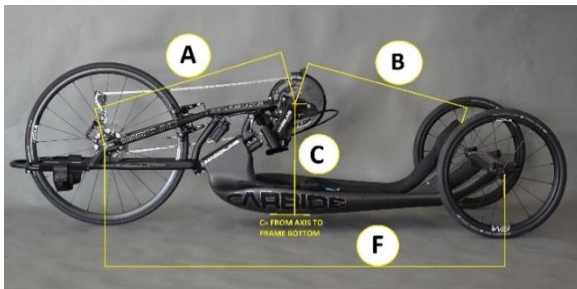
ORDER FORM – CARBIDE

END USER	
DEALER	
SHIPPING ADDRESS	
PHONE NUMBER	

 ORDER

 QUOTATION


BODY HEIGHT	cm
BODY WEIGHT	kg
B	cm
C	cm
Drx	cm
Dlx	cm
Erx	cm
Elx	cm
Frx	cm
Flx	cm
Grx	cm
Glx	cm
H	cm
J	cm



A	cm
B	cm
C	cm
F	20" 155 cm 26" 147 cm

Additional information about the end user:

PHOTOS OF THE CUSTOMER ON A HANDBIKE	<input type="checkbox"/> LATERAL	<input type="checkbox"/> FRONT	<input type="checkbox"/> REAR
PHOTOS OF THE CUSTOMER IN THE WHEELCHAIR	<input type="checkbox"/> LATERAL	<input type="checkbox"/> FRONT	<input type="checkbox"/> REAR

ORDER FORM		QUANTITY	PRICE (€)	TOTAL (€)
	CARBIDE T1000 SHIMANO Di2 DURACE FR			
	CARBIDE T1000 SHIMANO Di2 ULTEGRA FR			
	CARBIDE T1000 SHIMANO Di2 ULTEGRA FF			
	CARBIDE T1000 SHIMANO Di2 ULTEGRA HYBRID FR			
	CARBIDE T800 SHIMANO Di2 DURACE FR			
	CARBIDE T800 SHIMANO Di2 ULTEGRA FR			
	CARBIDE T800 SHIMANO Di2 ULTEGRA FF			
	CARBIDE T800 SHIMANO Di2 ULTEGRA HYBRID FR			
*FR=ADJUSTABLE FORK ; FF=FIXED FORK				
FRAME	CARBON T1000		-	-
	CARBON T800		-	-
FORK	ALUMINIUM ALLOY 7020 ADJUSTABLE IN HEIGHT AND LENGTH		-	-
	ALUMINIUM ALLOY 7020 FIXED FORK		-	-
SHIFTING	<u>FOR PARAPLEGICS: ELECTRONIC SHIFTING OPTIONS</u>			
	MOUNTING	YOUR CHOICE		
	RIGHT GRIP		-	-
	LEFT GRIP		-	-
	<u>FOR TETRAPLEGICS: ELECTRONIC SHIFTING OPTIONS</u>			
	MOUNTING	YOUR CHOICE		
	CHIN SHIFTING		+	
	ELBOW SHIFTING		+	
BRAKE	DOUBLE FRONT CALIPER BRAKE		-	-
	FRONT CALIPER BRAKE + MECHANICAL FRONT DISK BRAKE		+	
	FRONT CALIPER BRAKE + HYDRAULIC FRONT DISK BRAKE		+	
	DOUBLE FRONT CALIPER BRAKE SUPERLIGHT FSA BRAKES		+	
	DOUBLE FRONT CALIPER BRAKE SUPERLIGHT DURACE BRAKES		+	
	TETRAPLEGIC COASTER BRAKE		+	
	TETRAPLEGIC ELBOW BRAKING SUPPORT ON BOTH FRAMESIDES		+	
CHAINRING 11x2V.	34-48		-	-
	34-50		-	-
	36-52		-	-
	34-46		-	-
CASSETTE	SHIMANO 11V. 11-32		-	-
	SHIMANO 11V. 11-36		-	-
	SHIMANO 11V. 11-40		-	-
	SHIMANO 11V. 11-42		-	-
1° SET OF WHEELS	SET WHEELSBIKE STANDARD ALUMINIUM WHEELS 26/20''		-	-
	SET WHEELSBIKE STANDARD ALUMINIUM WHEELS 26/26''		-	-

	SET WHEELSBIKE SUPERLIGHT ALUMINIUM WHEELS 20/26" (UPGRADE)		+																
	SET WHEELSBIKE SUPERLIGHT ALUMINIUM WHEELS 26/26" (UPGRADE)		+																
OPTIONAL 2° SET OF WHEELS	SET WHEELSBIKE CARBON SLIGHT T-TUBE 26"/20"		+																
	SET WHEELSBIKE CARBON SLIGHT T-TUBE 26"/20" F/DISC		+																
	SET WHEELSBIKE CARBON SLIGHT CLINCHER 26"/20"		+																
	SET WHEELSBIKE CARBON SLIGHT CLINCHER 26"/20" F/DISC		+																
	SET WHEELSBIKE CARBON SLIGHT T-TUBE 26"/26"		+																
	SET WHEELSBIKE CARBON SLIGHT T-TUBE 26"/26" F/DISC		+																
	SET WHEELSBIKE CARBON SLIGHT CLINCHER 26"/26"		+																
	SET WHEELSBIKE CARBON SLIGHT CLINCHER 26"/26" F/DISC		+																
	SET IN CARBONIO CORIMA AERO T-TUBE 26"/20"		+																
	SET IN CARBONIO CORIMA AERO T-TUBE 26"/26"		+																
	SET WHEELSBIKE CARBON LENTICOLAR T-TUBE 26"/20"		+																
	SET WHEELSBIKE CARBON LENTICOLAR T-TUBE 26"/20" F/DISC		+																
	TIRES	VITTORIA RUBINO PRO 650x23c 23-571		-	-														
SCHWALBE PRO ONE TLE 26"x1,10"			-	-															
SCHWALBE PRO ONE TLE 20"x1,10"			-	-															
TUBOLARE TUFO S3 LITE ROAD 26"-25mm			-	-															
TUBOLARE TUFO ELITE PULSE 20"-25mm			-	-															
CRANKARMS (in mm)	152,5		-	-															
	155		-	-															
	157,5		-	-															
	160		-	-															
	162,5		-	-															
	165		-	-															
	167,5		-	-															
	170		-	-															
HANDGRIPS	ERGONOMIC ALUMINIUM 28° - Ø35mm (30mmx38mm) - SIZE M		-	-															
	ERGONOMIC ALUMINIUM 28° - Ø38mm (35mmx40mm) - SIZE L		-	-															
	TETRAPLEGIC HANDGRIPS „C”		+																
	TETRAPLEGIC ACTIVE HANDS GENERAL PURPOSE GRIPPING AID (PAIR)		+																
	<table border="1"> <thead> <tr> <th></th> <th>WRIST CIRCUM- FERENCE</th> <th>WRIST-MIDDLE FINGER (TOP)</th> <th>YOUR CHOICE</th> </tr> </thead> <tbody> <tr> <td>SMALL</td> <td>135mm-150mm 5.3"-5.9"</td> <td>135mm-175mm 5.3"-6.9"</td> <td></td> </tr> <tr> <td>STANDARD</td> <td>145mm-185mm 5.7"-7.2"</td> <td>175mm-210mm 6.8"-8.3"</td> <td></td> </tr> <tr> <td>LARGE</td> <td>180mm-220mm 7.1"-8.7"</td> <td>195mm-280mm 7.7"-11.0"</td> <td></td> </tr> </tbody> </table>		WRIST CIRCUM- FERENCE	WRIST-MIDDLE FINGER (TOP)	YOUR CHOICE	SMALL	135mm-150mm 5.3"-5.9"	135mm-175mm 5.3"-6.9"		STANDARD	145mm-185mm 5.7"-7.2"	175mm-210mm 6.8"-8.3"		LARGE	180mm-220mm 7.1"-8.7"	195mm-280mm 7.7"-11.0"			
	WRIST CIRCUM- FERENCE	WRIST-MIDDLE FINGER (TOP)	YOUR CHOICE																
SMALL	135mm-150mm 5.3"-5.9"	135mm-175mm 5.3"-6.9"																	
STANDARD	145mm-185mm 5.7"-7.2"	175mm-210mm 6.8"-8.3"																	
LARGE	180mm-220mm 7.1"-8.7"	195mm-280mm 7.7"-11.0"																	
CUSHION	P.A. TECHNOLOGY CUSHION	01	-	-															
FOOTREST	ADJUSTABLE FOOTREST	01	-	-															
ACCESSORIES	SAFETY FLAG	01	-	-															

	DRAFTING BUMPER		01	-	-
	CARBON FIBER CHAINGUARD		01	-	-
	MIRROR		01	-	-
	LEG FIXATION STRAPS WITH LATERAL FIXATION PLATES			+	
	SAFETY BELT			+	
	WATER BOTTLE AND CAGE			+	
	COMPUTER GARMIN 530 PERFORMANCE			+	
	COMPUTER GARMIN 830 PERFORMANCE			+	
	SRM POWERMETER + AXIS 24mm & FLANGE			+	
	POWER2-MAX NGeco + AXIS 24mm & FLANGE			+	
	POWER2-MAX NG + AXIS 24mm & FLANGE			+	
	FRONT LIGHT LED MICRO DRIVE 600 LUMEN, USB-RECHARGING			+	
	FRONT LIGHT LED SUPER DRIVE 1600 LUMEN, USB-RECHARGING			+	
	REAR LIGHTLED STRIP DRIVE 150 LUMEN, MICRO-USB-RECHARGING			+	
	EXTRA STEERING DUMPNER			+	
COLORS	FORK COLOR		01	-	-
	FORK DECALS COLOR		01	-	-
	FRAME COLOR		01	-	-
	FRAME DECALS COLOR		01	-	-
	FINISH OF THE BIKE	O MATT O GLOSSY	01	-	-